

# **MDRYWALL**

## **INTERIOR DESIGN & CONSTRUCTION PORTFOLIO**

**CIHAN KALDIK**

Commercial & Residential Interior  
Projects

- **DRYWALL**
- **METAL STUD FRAMING**
- **T-BAR CEILING**
- **INTERIOR FINISHING**
- **PAINTING**

## **Professional Summary**

Experienced construction and interior finishing specialist with more than 10 years of experience in commercial and residential interior projects. Specialized in drywall installation, light gauge steel framing, suspended T-Bar ceiling systems, interior painting, decorative wall finishes, and construction coordination. Strong background working with construction teams, coordinating with mechanical and electrical trades, and delivering high-quality interior finishing for offices, hotels, residential buildings, and commercial developments.

# ORION WALL SYSTEMS INC.

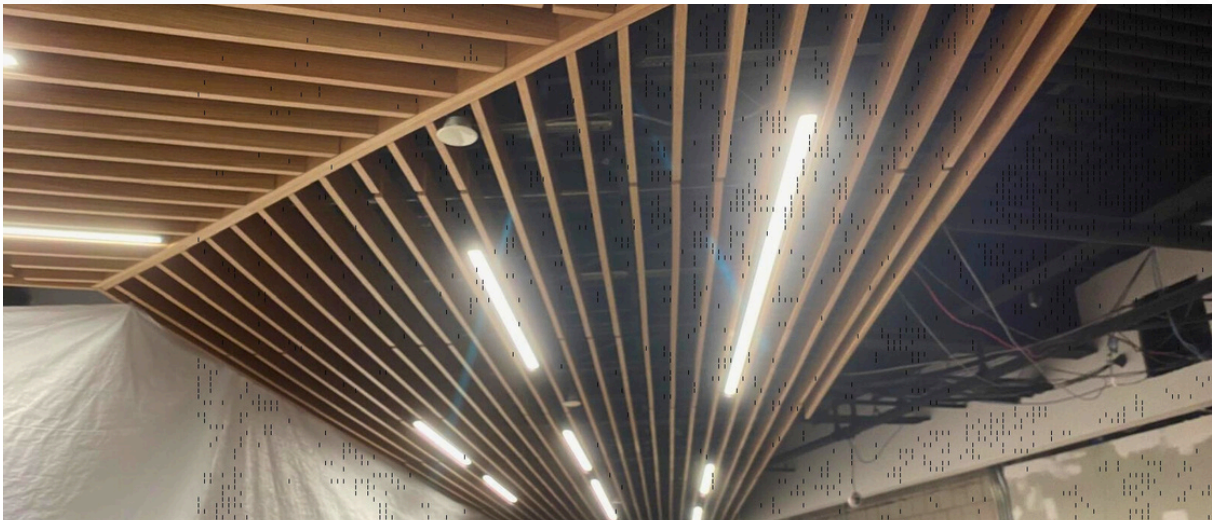
<b>Employment Period</b>	June 2026
<b>Key Responsibilities</b>	Hotel interior finishing including decorative wall finishes and paint color selection.

## SCOPE OF WORK

- Hotel interior finishing and decorative wall installations
- Coordination of drywall and ceiling finishing systems
- Selection and application of decorative wall finishes
- Collaboration with project teams for interior completion

## RESPONSIBILITIES

- Supervising interior finishing installation
- Coordinating drywall finishing and decorative wall work
- Ensuring design consistency and finishing quality



# WALLEX CONSTRUCTION INC.

<b>Role</b>	2026 - Downtown Commercial Development
<b>Key Responsibilities</b>	Interior Finish and Construction Specialist

## SCOPE OF WORK

- Light gauge steel stud framing installation
- Commercial interior partition framing
- Exterior wall framing on concrete slab
- Interior drywall installation

## RESPONSIBILITIES

- Layout and installation of metal studs and tracks
- Ensuring correct stud spacing (16" / 24")
- Preparing framing systems for drywall installation



# SQUAREINCH CONSTRUCTORS

<b>Employment Period</b>	2025
<b>Key Responsibilities</b>	T-Bar Apartment Corridors

## SCOPE OF WORK

- T-Bar ceiling system installation in apartment corridors
- Suspended ceiling layout and grid installation
- Integration with lighting and sprinkler systems

## RESPONSIBILITIES

- Layout and installation of metal studs and tracks
- Ensuring correct 16" / 24" stud spacing
- Framing for commercial interior partitions
- Preparation for drywall installation and finishing



# DYNAMIC BUILDERS INC

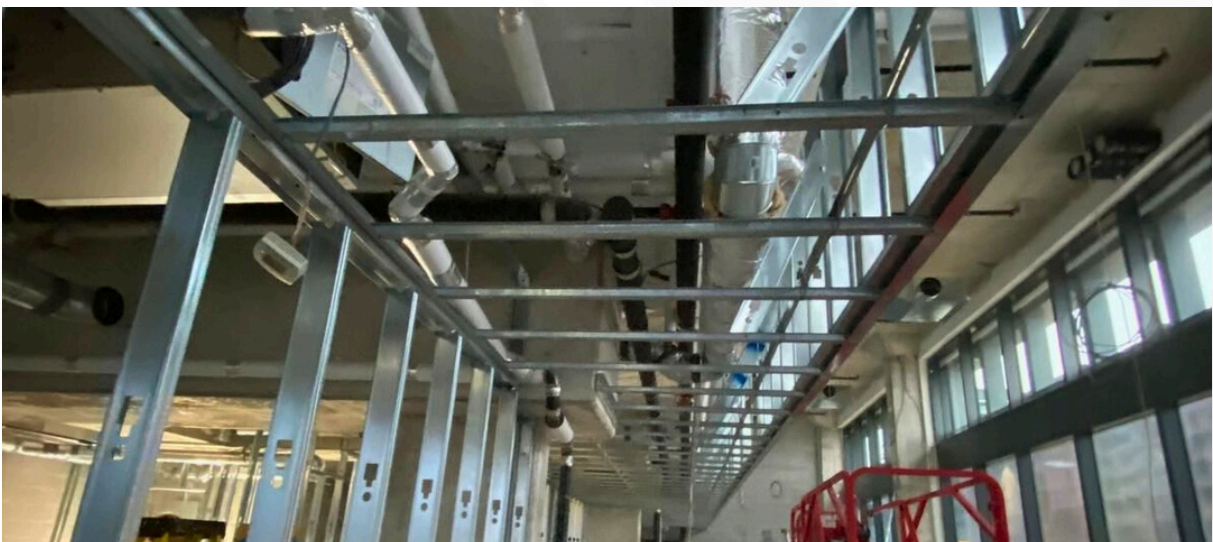
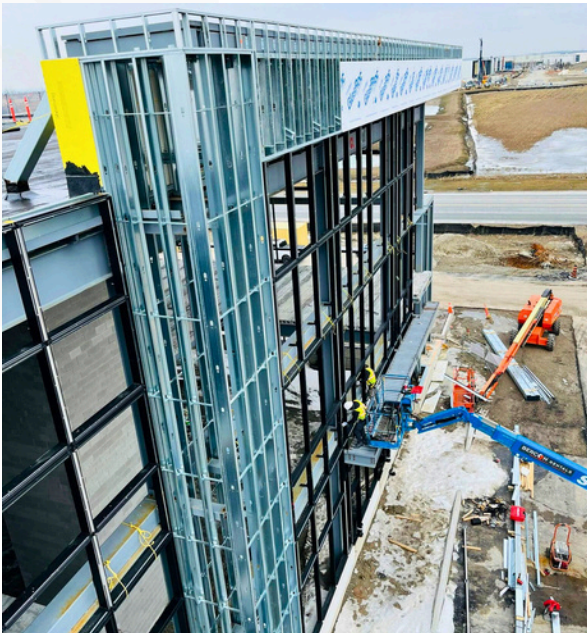
<b>Employment Period</b>	April 22, 2024 to December 26, 2025.
<b>Key Responsibilities</b>	Frame/Drywall, Interior Renovation & Coordination

## SCOPE OF WORK

- Steel stud framing and drywall installation
- Commercial interior renovation projects
- Interior ceiling and partition construction

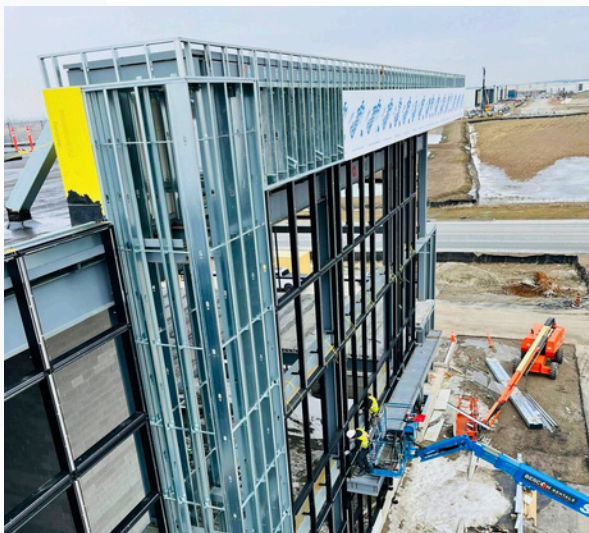
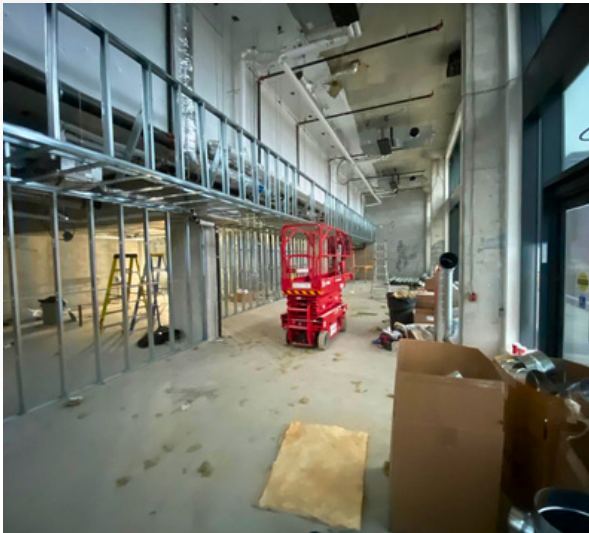
## RESPONSIBILITIES

- Installation of metal stud partitions and drywall systems
- Coordination with other trades on site
- Assisting in layout planning and construction sequencing



# DYNAMIC BUILDERS INC

PAGE 2



# DYNAMIC BUILDERS INC

PAGE 3



# VAN HORNE CONSTRUCTION

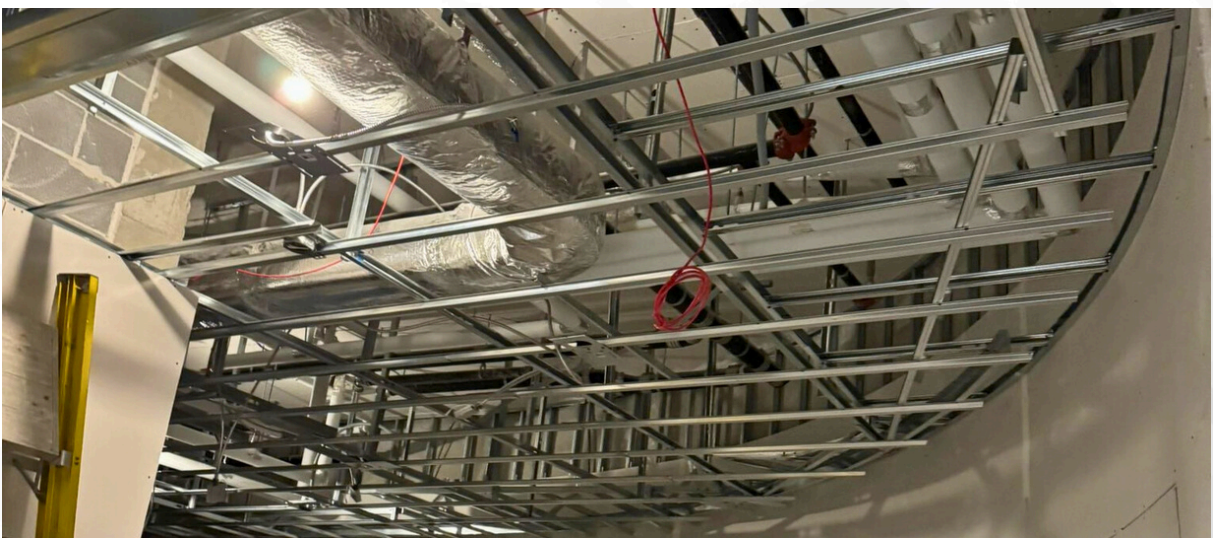
<b>Employment Period</b>	JAN 2022 - APR 2024
<b>Key Responsibilities</b>	Drywall - Painting - T-Bar Ceiling - Designer

## SCOPE OF WORK

- Installation of metal stud partitions and drywall systems
- Coordination with other trades on site
- Assisting in layout planning and construction sequencing

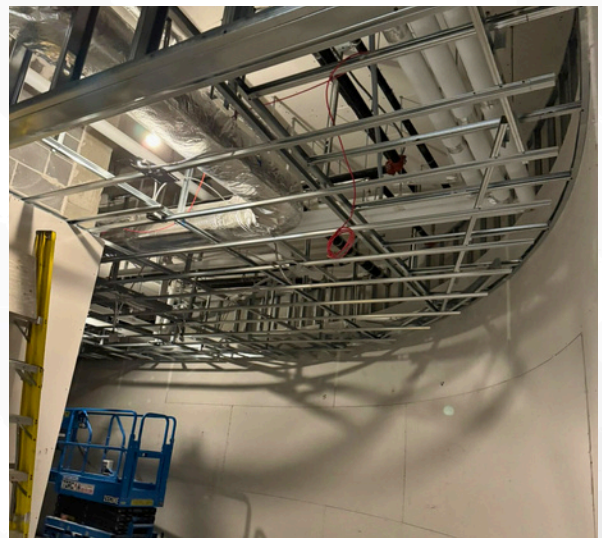
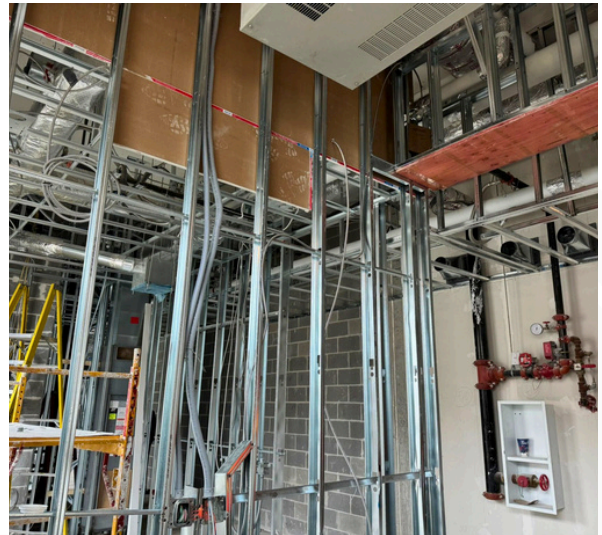
## RESPONSIBILITIES

- Coordinating drywall and ceiling installations
- Assisting with interior layout planning
- Supporting decorative finishing work



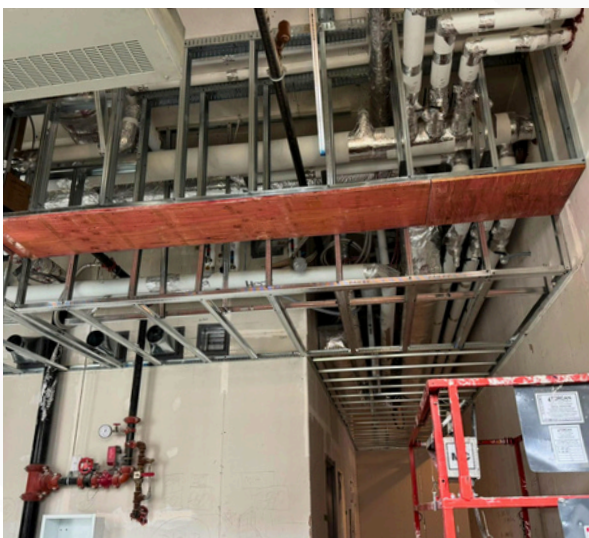
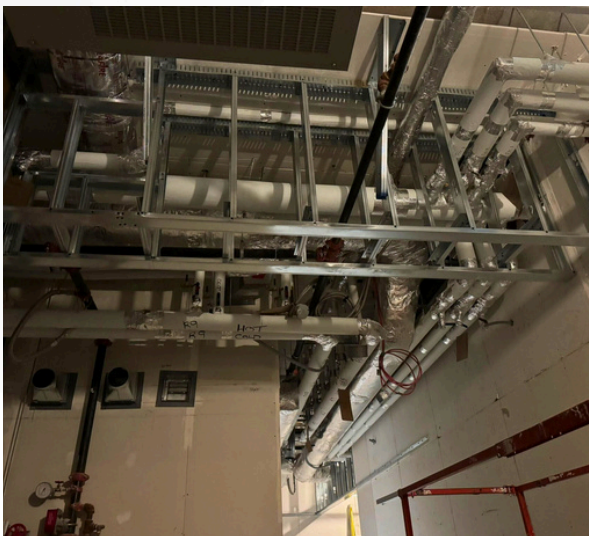
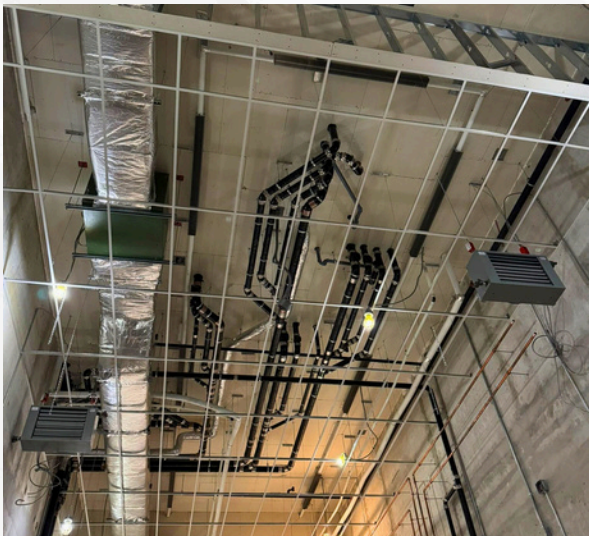
# VAN HORNE CONSTRUCTION

PAGE 2



# VAN HORNE CONSTRUCTION

PAGE 3



# PERAS CONSTRUCTION

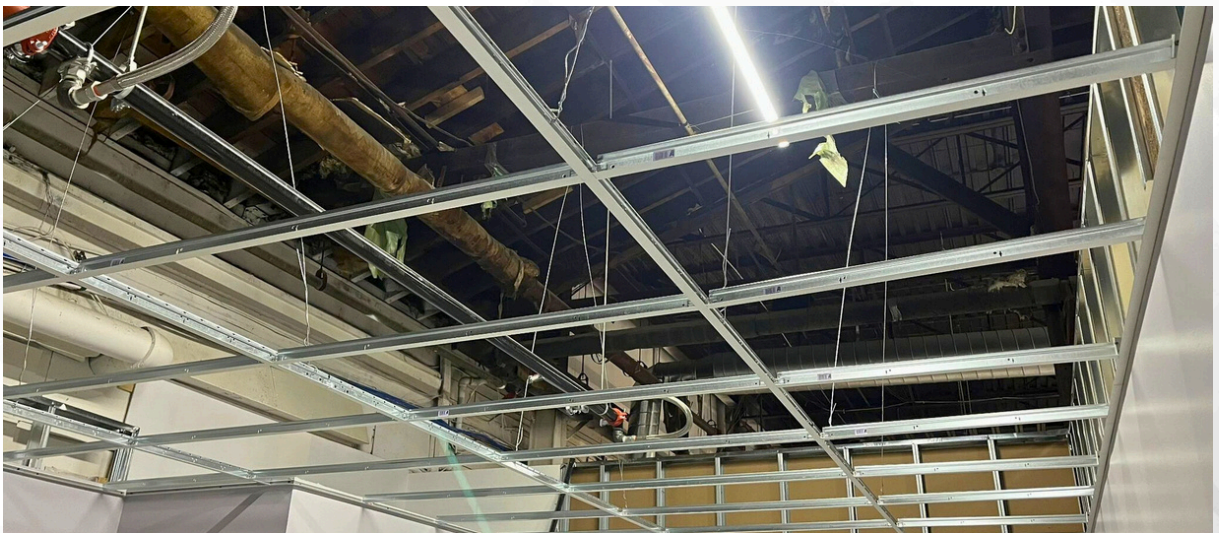
<b>Employment Period</b>	JAN 2016- DEC 2021      JUN 2025- OCT 2025
<b>Key Responsibilities</b>	Interior Design - T Bar Ceiling - Painting

## SCOPE OF WORK

- Interior design coordination
- T-Bar ceiling installation and drywall systems
- Interior painting and decorative finishes

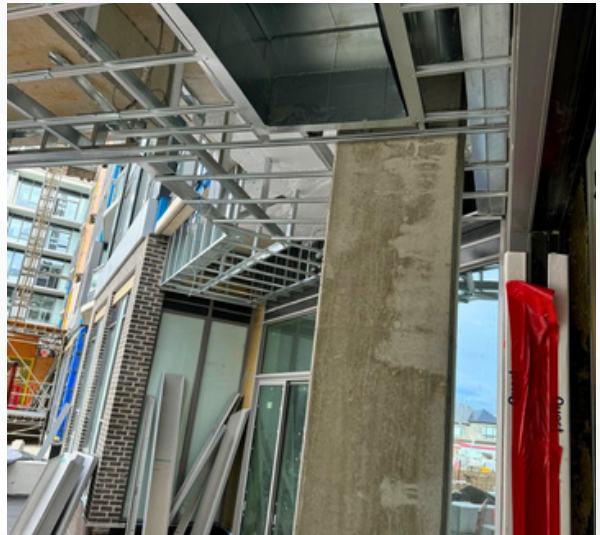
## RESPONSIBILITIES

- Coordinating interior finishing work
- Supporting drywall layout and ceiling installation
- Assisting with paint and finish coordination



# PERAS CONSTRUCTION

PAGE 2



# PERAS CONSTRUCTION

PAGE 3



# PERAS CONSTRUCTION

PAGE 4

